

45%

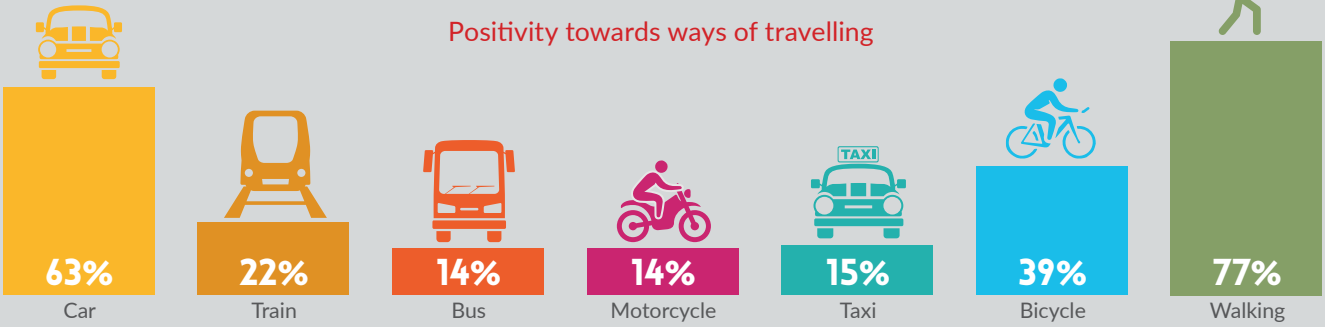
Suggested they would book a staycation in Scotland

# NORTH EAST TRANSPORT BEHAVIOUR AND ATTITUDE SURVEYS

Wave 1 Report  
(survey undertaken between 13th and 21st July 2020)  
Key Findings Infographic

Those in **Aberdeen City** were more likely to have increased the amount they walk for leisure.

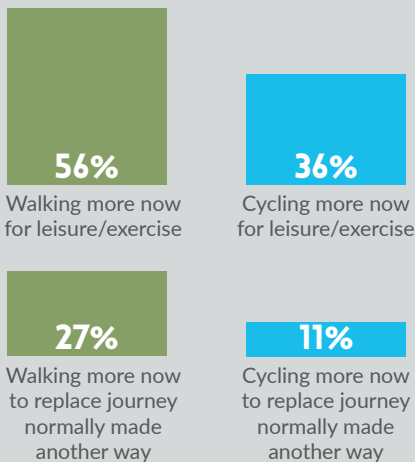
## Positivity towards ways of travelling



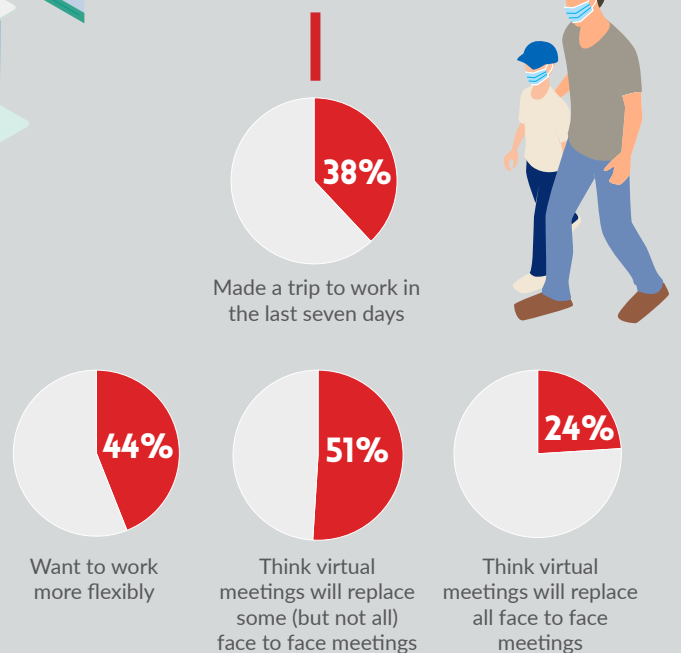
## Reasons for feeling negatively towards public transport



## Since the Covid-19 restrictions



## COMMUTING BEHAVIOURS



nestrans

Smarter Choices, Smarter Places  
Supporting Sustainable Travel

SYSTRA