

Those in **Aberdeen City** more likely to travel to work by public transport than those in **Aberdeenshire**

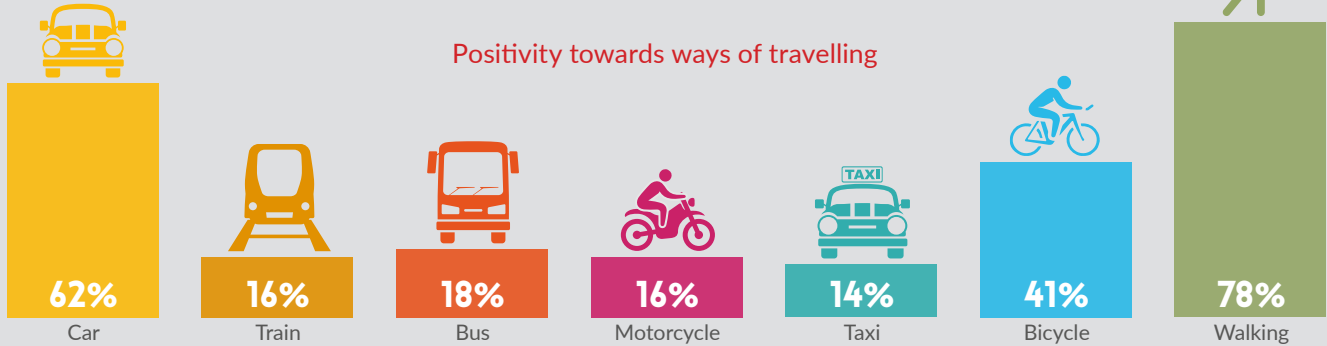
NORTH EAST TRANSPORT BEHAVIOUR AND ATTITUDE SURVEYS

Wave 5 Report
(Survey Undertaken between 12th October and 20th October)
Key Findings Infographic

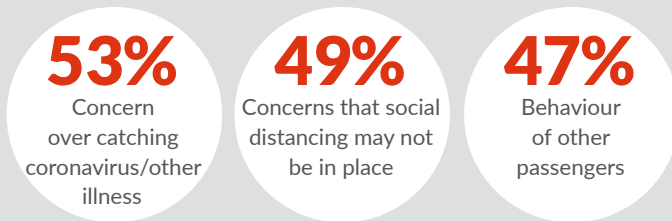
7/10

agree that use of face coverings on public transport makes them feel safer

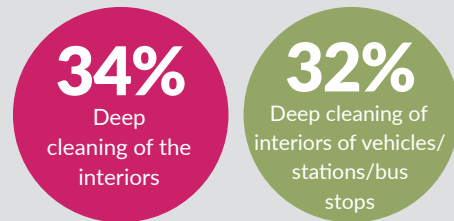
Positivity towards ways of travelling



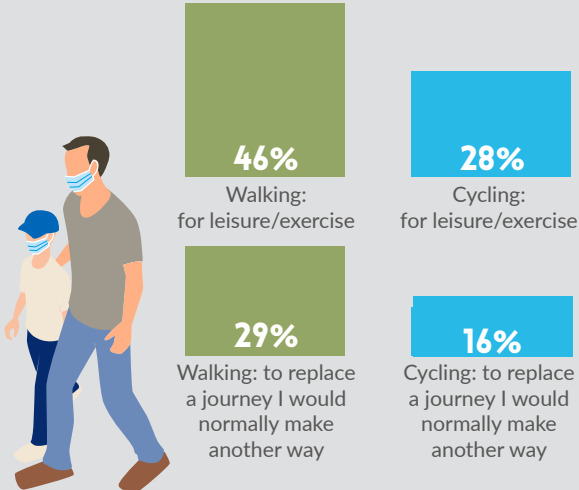
Reasons for feeling negatively towards public transport



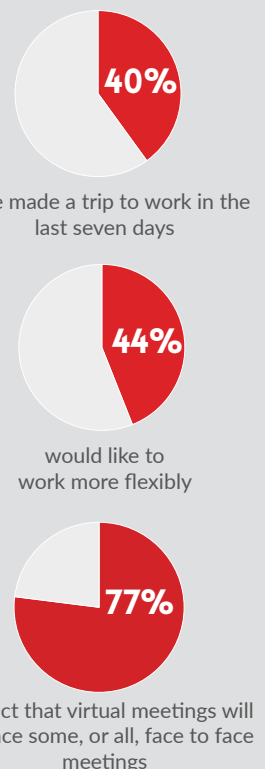
How to feel safer



Since the Covid-19 restrictions



Commuting behaviours



The results for Wave 5 are broadly similar to Waves 1-4.

Key differences include:

- Less had made journeys to see their friends and family in the last seven days
- A higher amount suggested being more likely to walk and cycle currently compared to pre-Covid-19 restrictions

nestrans

Smarter Choices, Smarter Places
Supporting Sustainable Travel

SYSTRA