

Those in **Aberdeen City** were more likely to go shopping in the last seven days than those in **Aberdeenshire**

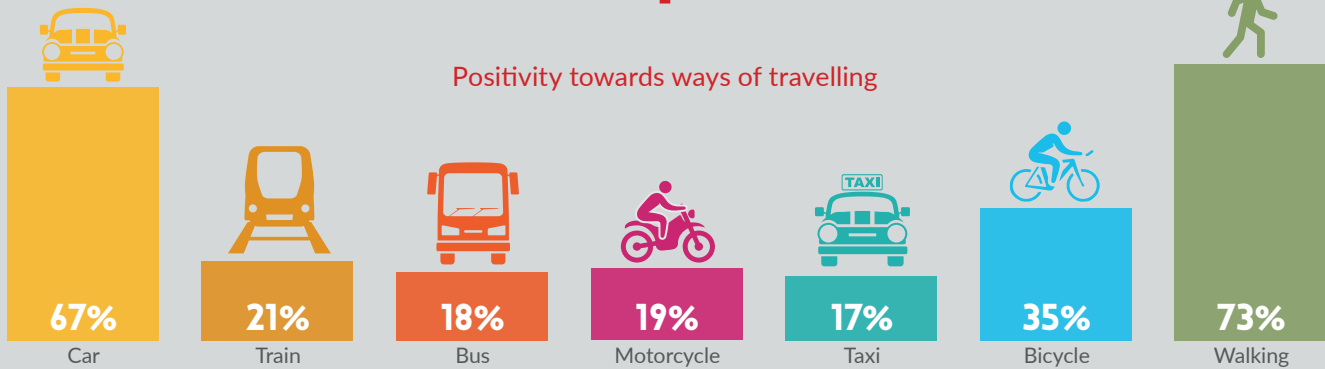
NORTH EAST TRANSPORT BEHAVIOUR AND ATTITUDE SURVEYS

Wave 6 Report
(Survey Undertaken between 2nd November and 9th November)
Key Findings Infographic

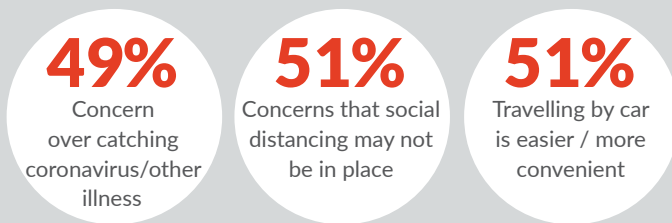
6/10

agree that use of **face coverings** on public transport makes them feel **safer**

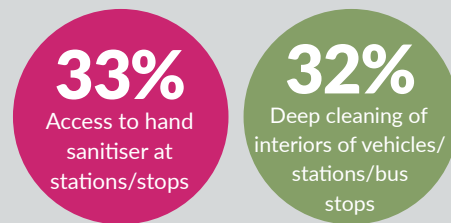
Positivity towards ways of travelling



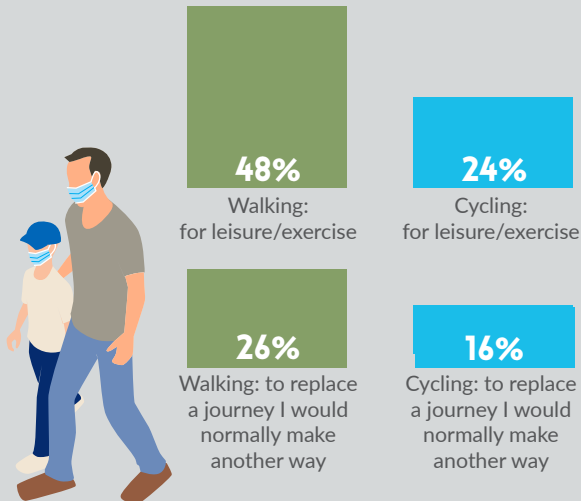
Reasons for feeling negatively towards public transport



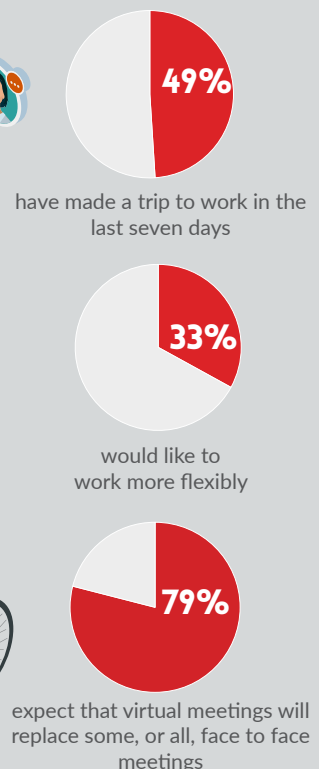
How to feel safer



Since the Covid-19 restrictions



Commuting behaviours



The results for Wave 6 are broadly similar to Waves 1-5.

Key differences include:

- More had travelled to work in the last seven days
- Slightly less felt positively towards walking and cycling
- Less people want to work flexibly in the future

nestrans

Smarter Choices, Smarter Places
Supporting Sustainable Travel

SYSTRA