

Those in **Aberdeen City** were more likely to go shopping by cycling or walking in the last seven days than those in **Aberdeenshire**

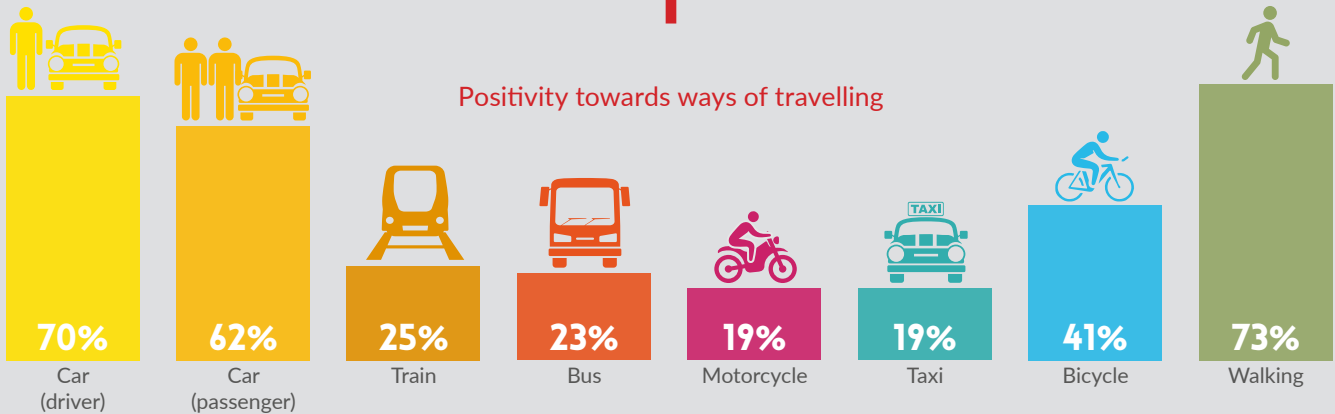
NORTH EAST TRANSPORT BEHAVIOUR AND ATTITUDE SURVEYS

Wave 7 Report
(Survey Undertaken between 23rd November to 1st December)
Key Findings Infographic

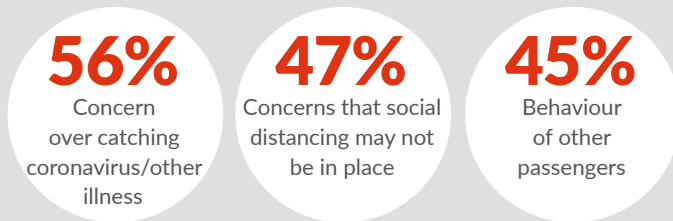
6/10

agree that use of face coverings on public transport makes them feel safer

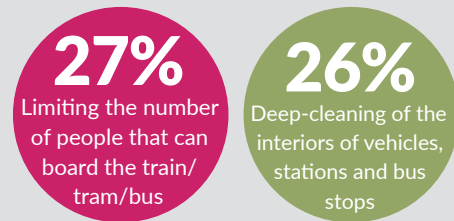
Positivity towards ways of travelling



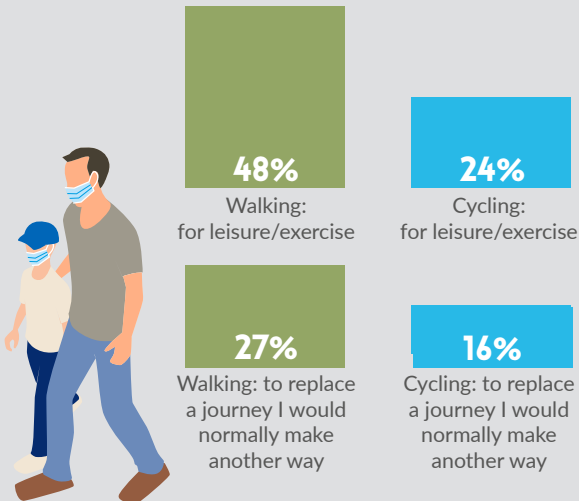
Reasons for feeling negatively towards public transport



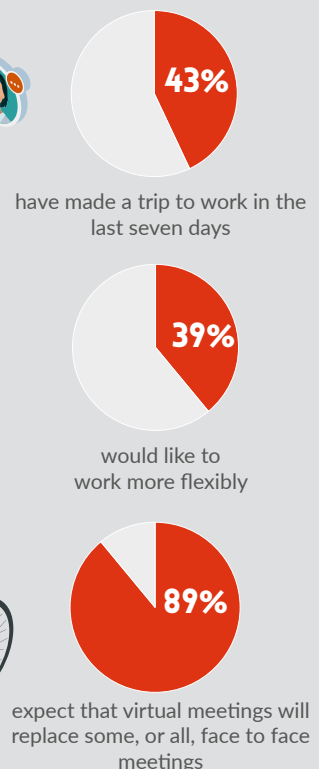
How to feel safer



Since the Covid-19 restrictions



Commuting behaviours



The results for Wave 7 are broadly similar to Waves 1-6.

Key differences include:

- Less had travelled to work in the last seven days
- More suggested that nothing would make them feel safer using public transport in the next month

nestrans

Smarter Choices,
Smarter Places
Supporting Sustainable Travel

SYSTRA