

Public transport users were **over twice** more likely to feel **positively** towards using the **train**

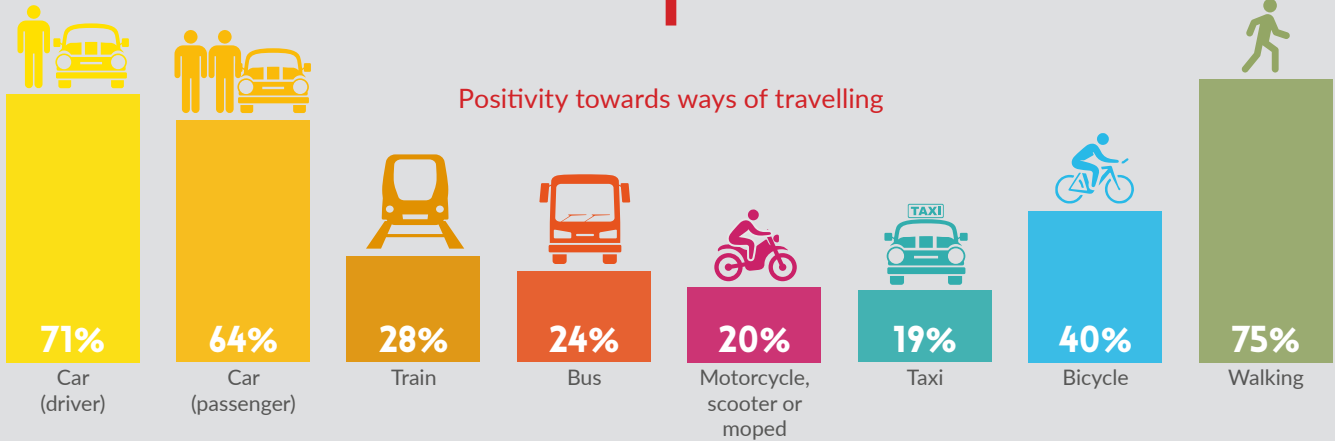
NORTH EAST TRANSPORT BEHAVIOUR AND ATTITUDE SURVEYS

Wave 8 Report
(Survey Undertaken between 14th December to 23rd December)
Key Findings Infographic

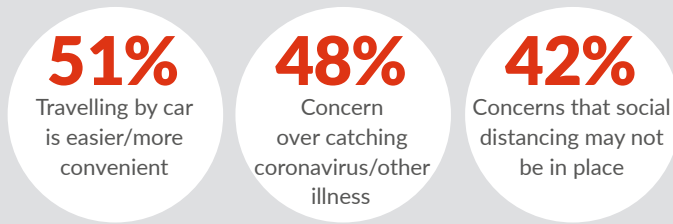
6/10

agree that use of face coverings on public transport makes them feel safer

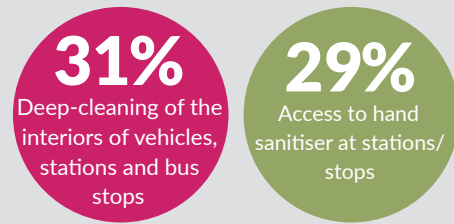
Positivity towards ways of travelling



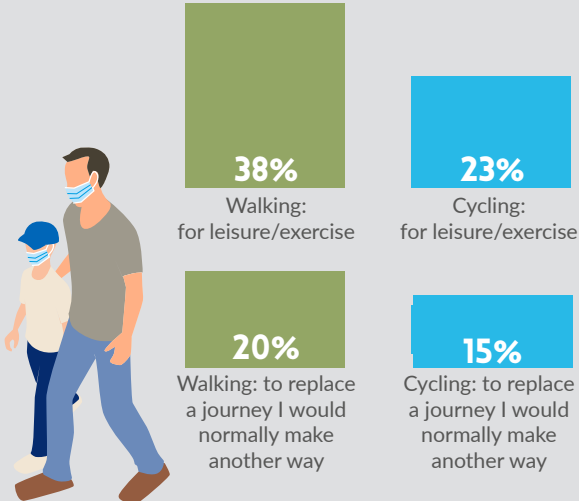
Reasons for feeling negatively towards public transport



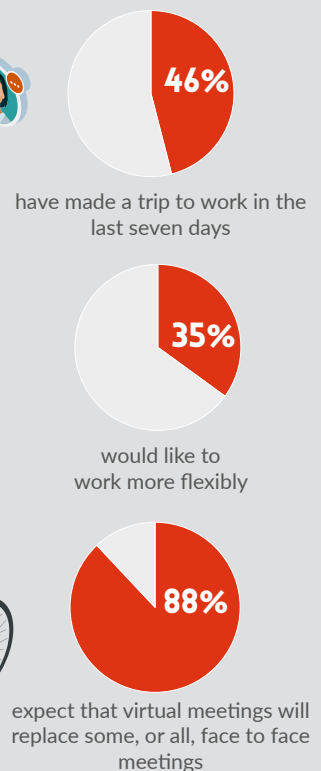
How to feel safer



Since the Covid-19 restrictions



Commuting behaviours



The results for Wave 8 are broadly similar to Waves 1-7.

Key differences include:

- Less had reported increased levels of walking and cycling since COVID-19 guidelines
- Less had travelled to work in the last seven days

nestrans

Smarter Choices,
Smarter Places
Supporting Sustainable Travel

SYSTRA