

Public transport users were **over twice** more likely to **feel positively** towards using the **bus**

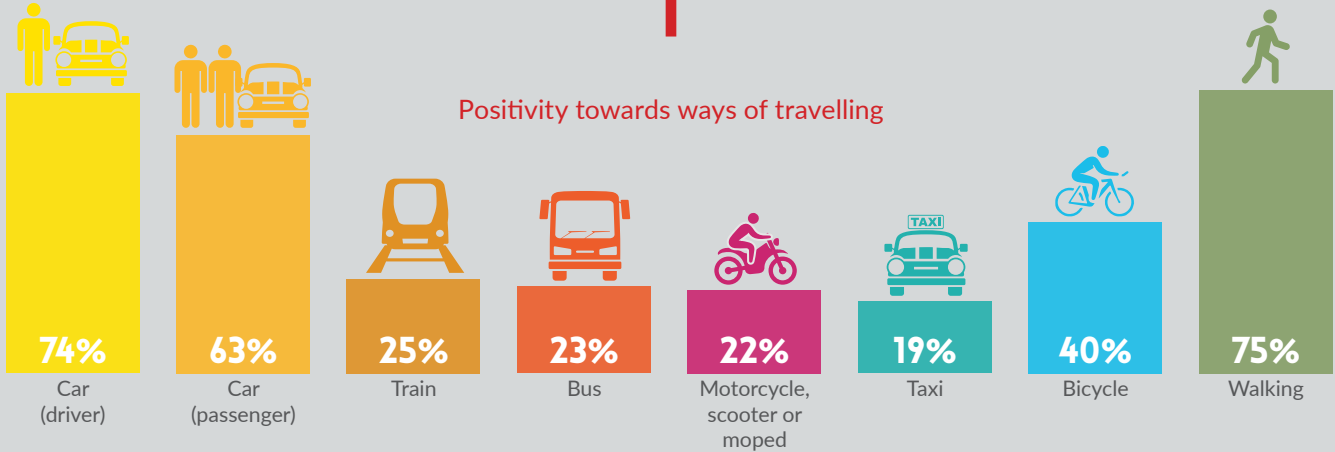
# NORTH EAST TRANSPORT BEHAVIOUR AND ATTITUDE SURVEYS

Wave 9 Report  
(Survey Undertaken between 18th January and 25th January 2021)  
Key Findings Infographic

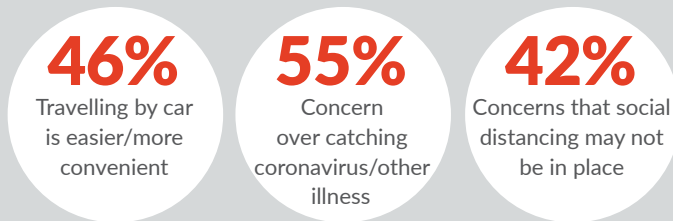
**7/10**

agree that use of face coverings on public transport makes them feel safer

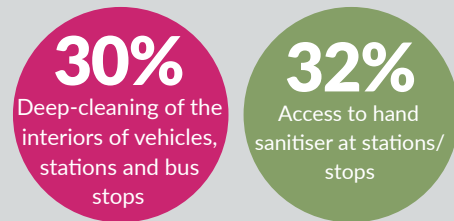
## Positivity towards ways of travelling



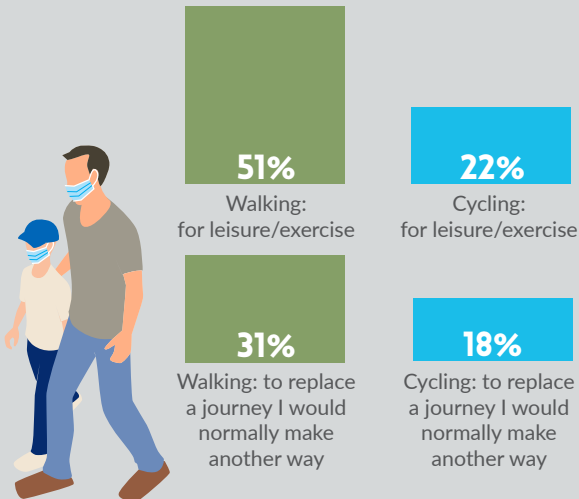
## Reasons for feeling negatively towards public transport



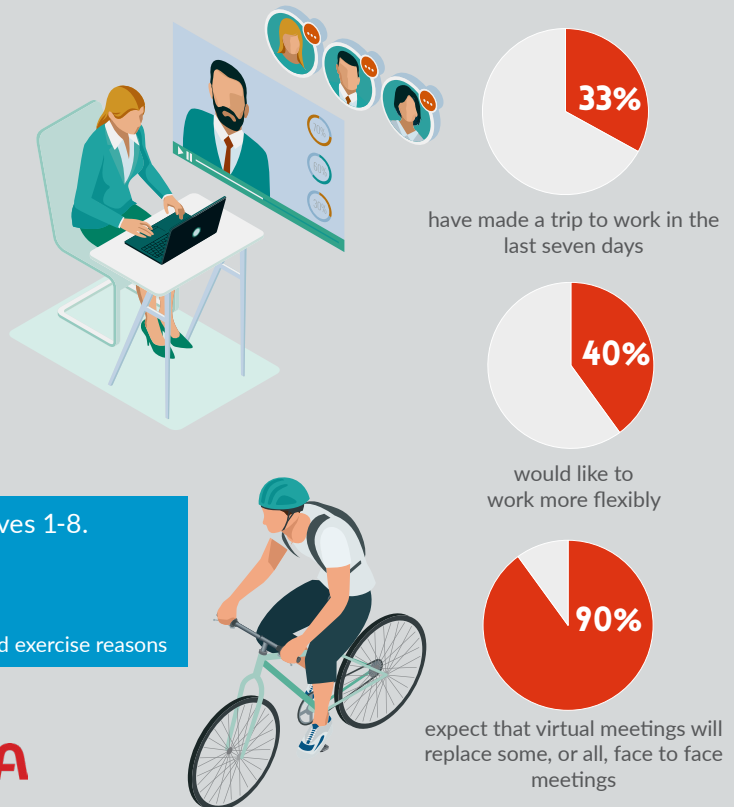
## How to feel safer



## Since the Covid-19 restrictions



## Commuting behaviours



The results for Wave 9 are broadly similar to Waves 1-8.

Key differences include:

- Less had travelled to work in the last seven days
- More would like to work more flexibly
- More have increased how much they walked for leisure and exercise reasons

nestrans

**Smarter Choices, Smarter Places**  
Supporting Sustainable Travel

**SYSTRA**