

Public transport users were **over twice** more likely to **feel positively** towards using the **bus**

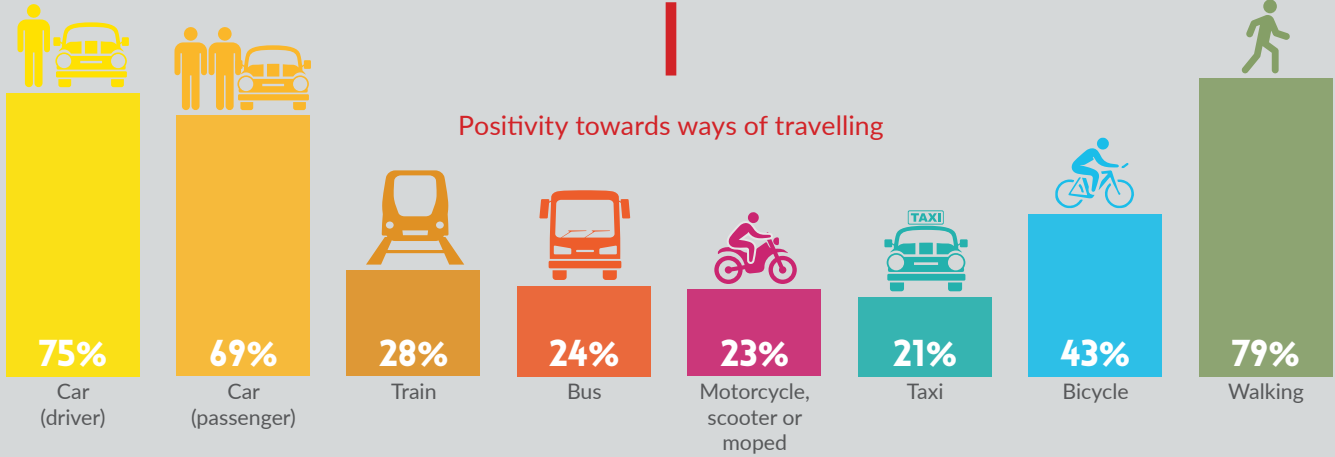
NORTH EAST TRANSPORT BEHAVIOUR AND ATTITUDE SURVEYS

Wave 10 Report
(Survey Undertaken between 8th February and 15th February 2021)
Key Findings Infographic

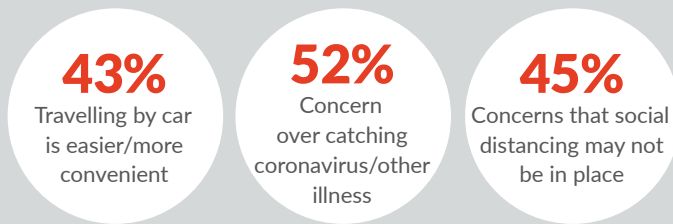
7/10

agree that use of face coverings on public transport makes them feel safer

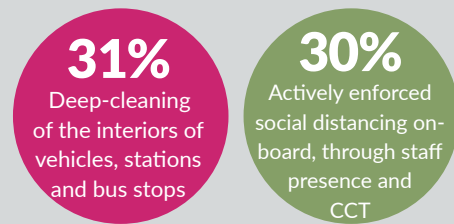
Positivity towards ways of travelling



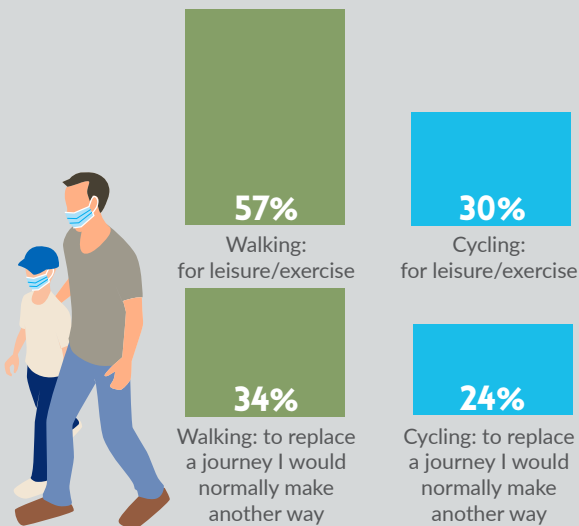
Reasons for feeling negatively towards public transport



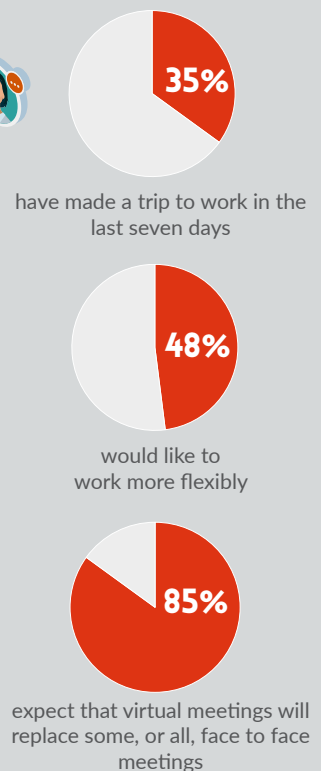
How to feel safer



Since the Covid-19 restrictions



Commuting behaviours



The results for Wave 10 are broadly similar to Waves 1-9.

Key differences include:

- Less had travelled to go shopping in the last seven days
- More have increased how likely they are to walk for leisure and exercise reasons since Covid-19 restrictions
- More felt positively about walking

nestrans

Smarter Choices, Smarter Places
Supporting Sustainable Travel

SYSTRA