

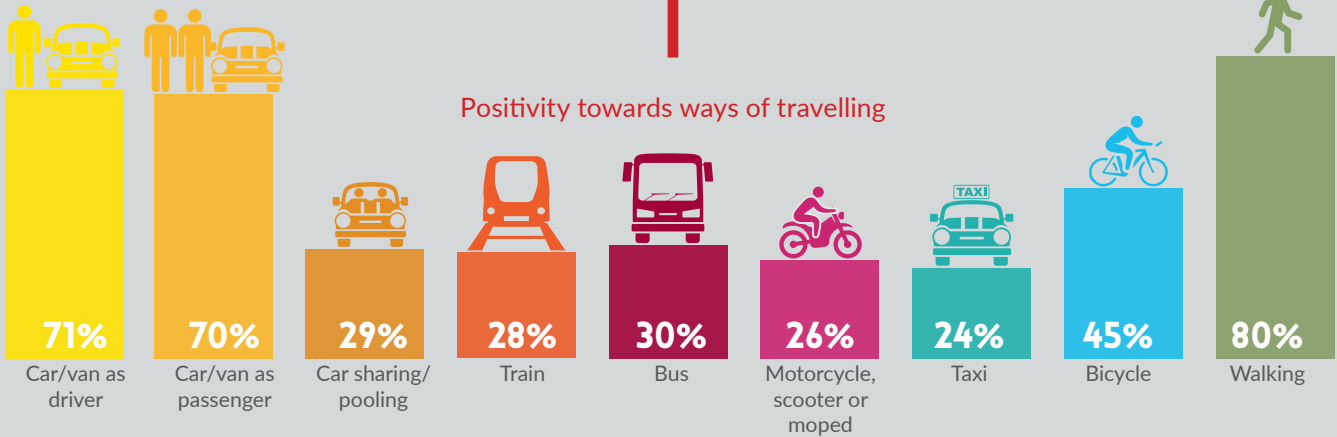
Public transport users were **over twice** more likely to **feel positively** towards using the **bus**

NORTH EAST TRANSPORT BEHAVIOUR AND ATTITUDE SURVEYS

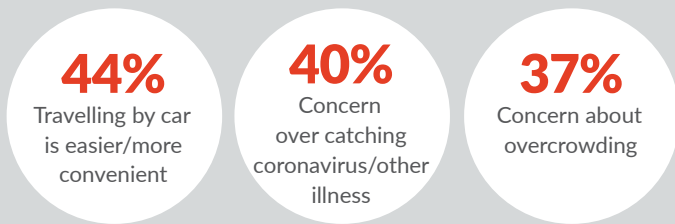
Wave 11 Report
(Survey undertaken between 10th June and 23rd June 2021)
Key Findings Infographic

7/10

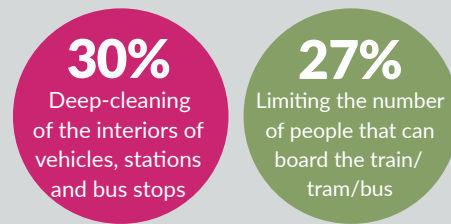
agree that use of face coverings on public transport makes them feel safer



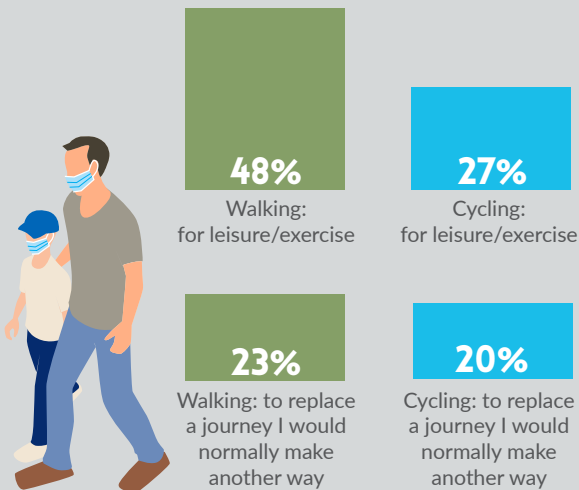
Reasons for feeling negatively towards public transport



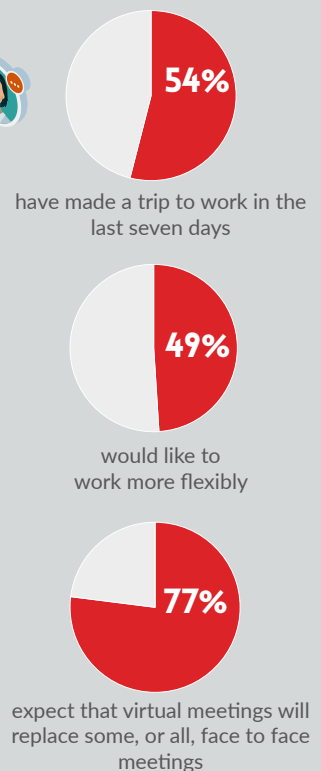
How to feel safer



Since the Covid-19 restrictions



Commuting behaviours



The results for Wave 11 are broadly similar to Waves 1-10.

Key differences include:

- More journeys are being undertaken
- Less are walking for these journeys and more are travelling by car
- Less are currently more likely to walk/cycle for leisure purposes
- Less feeling negative and unsafe towards public transport

nestrans

Smarter Choices, Smarter Places
Supporting Sustainable Travel

SYSTRA