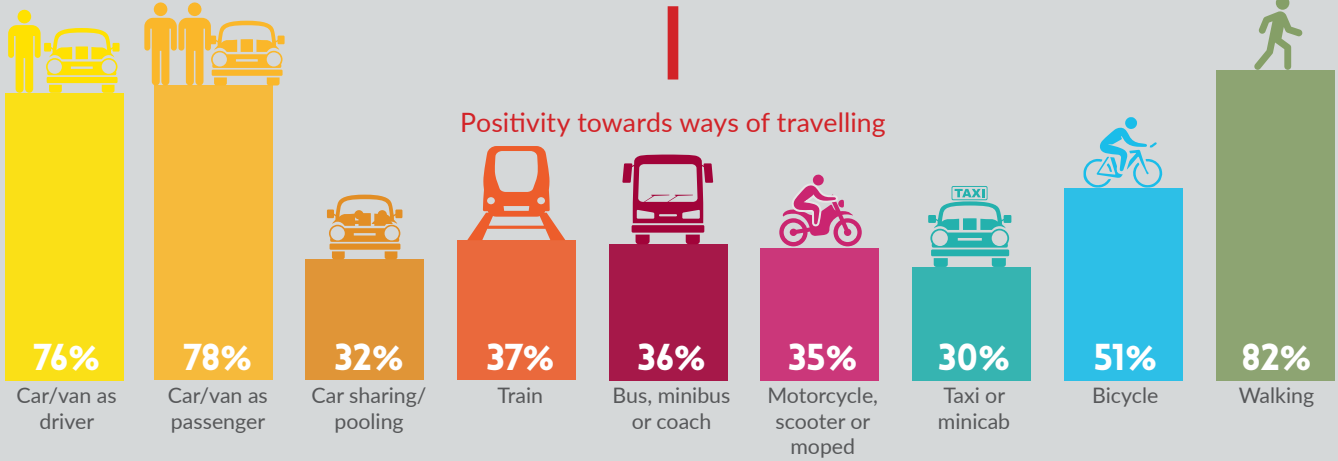


Public transport users were **over twice** more likely to **feel positively** towards using the **bus**

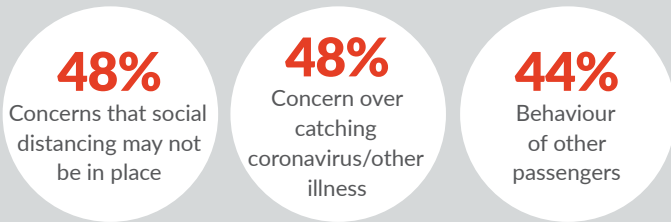
NORTH EAST TRANSPORT BEHAVIOUR AND ATTITUDE SURVEYS

Wave 12 Report
(Survey undertaken between 23rd August and 31st August 2021)
Key Findings Infographic

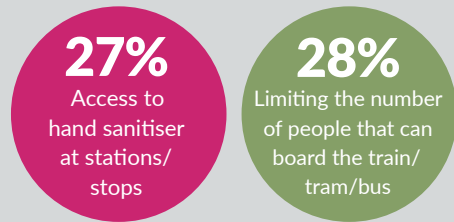
7/10 agree that social distancing on public transport makes them feel safer



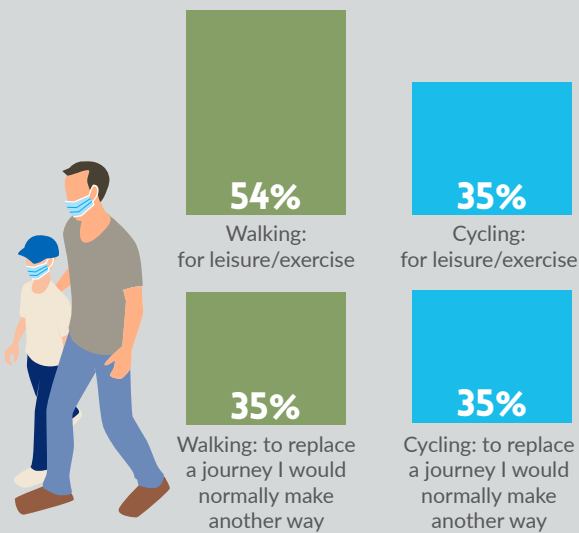
Reasons for feeling negatively towards public transport



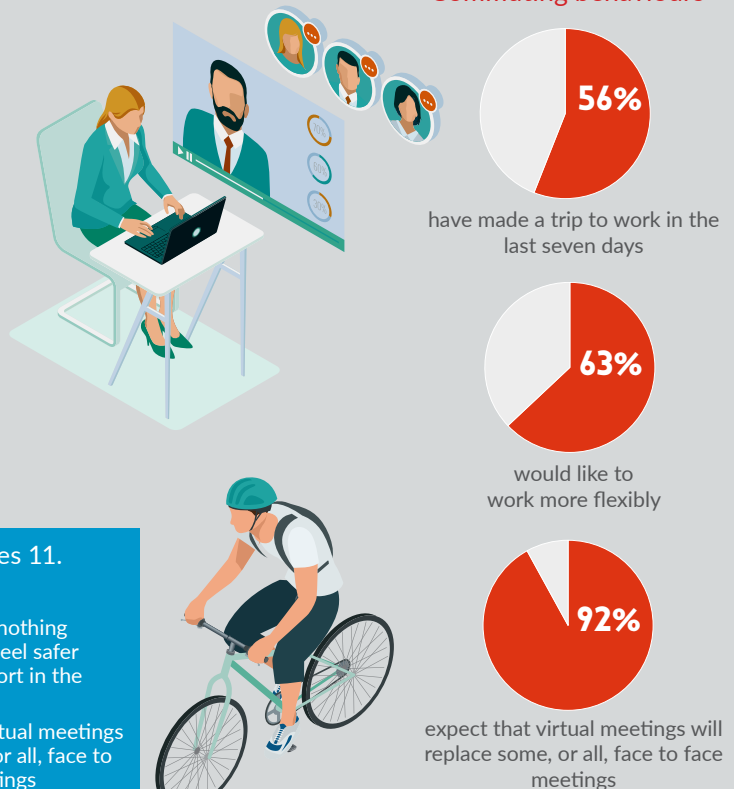
How to feel safer



Since the Covid-19 restrictions



Commuting behaviours



The results for Wave 12 are broadly similar to Waves 11. Key differences include:

- More are travelling to indoor leisure activities
- More are currently more likely to walk/cycle for leisure purposes
- More would like to work more flexibly
- Less reported that nothing would make them feel safer using public transport in the next month or so
- More anticipate virtual meetings will replace some, or all, face to face business meetings