

Public transport users were **over twice** more likely to **feel positively** towards using the **bus**

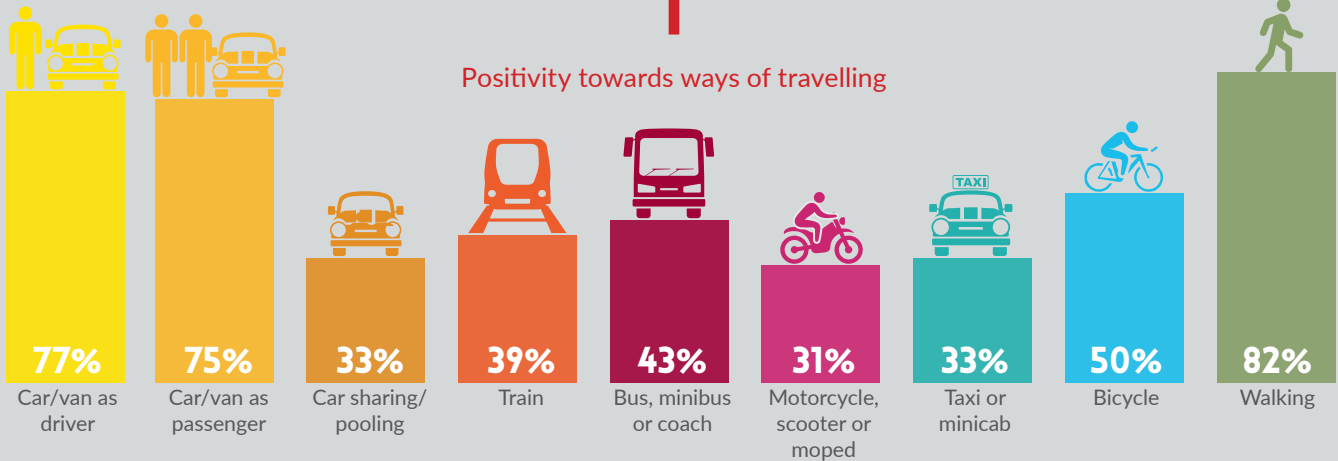
NORTH EAST TRANSPORT BEHAVIOUR AND ATTITUDE SURVEYS

Wave 13 Report
(Survey undertaken between 4th October and 11th October 2021)
Key Findings Infographic

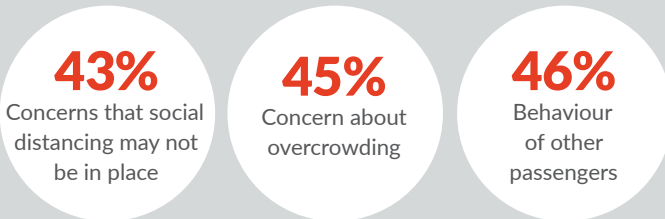
7/10

agree that social distancing on public transport makes them feel safer

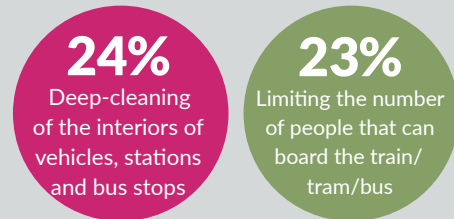
Positivity towards ways of travelling



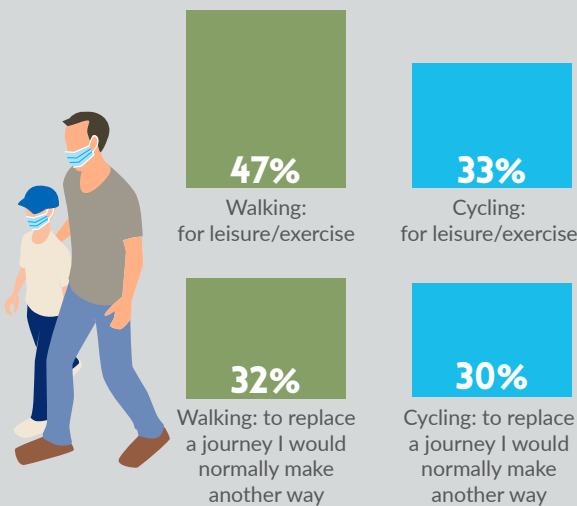
Reasons for feeling negatively towards public transport



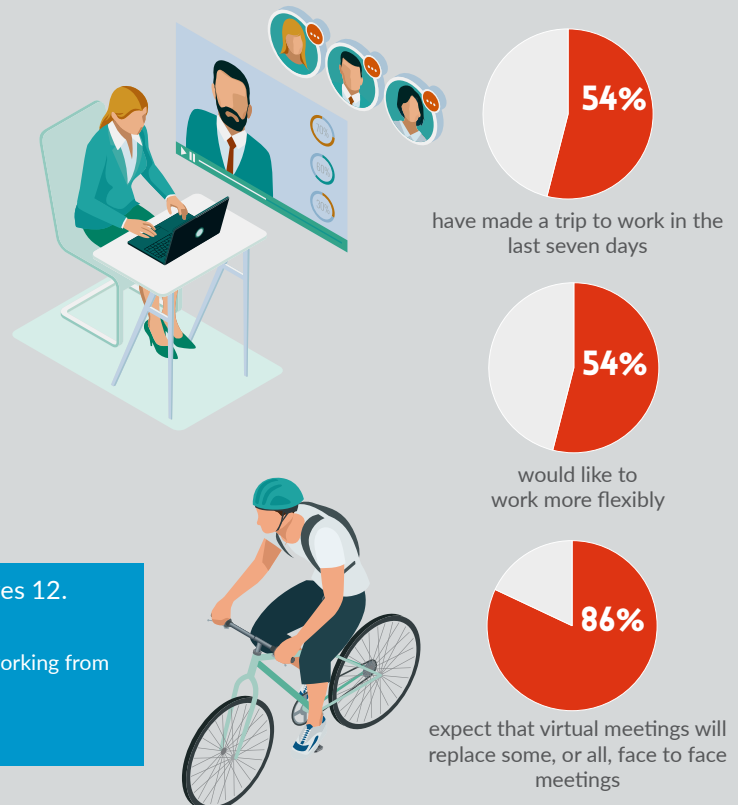
How to feel safer



Since the Covid-19 restrictions



Commuting behaviours



The results for Wave 13 are broadly similar to Waves 12. Key differences include:

- More are travelling to visit friends and family
- More people continue to feel safe using public transport
- More people are working from the office