

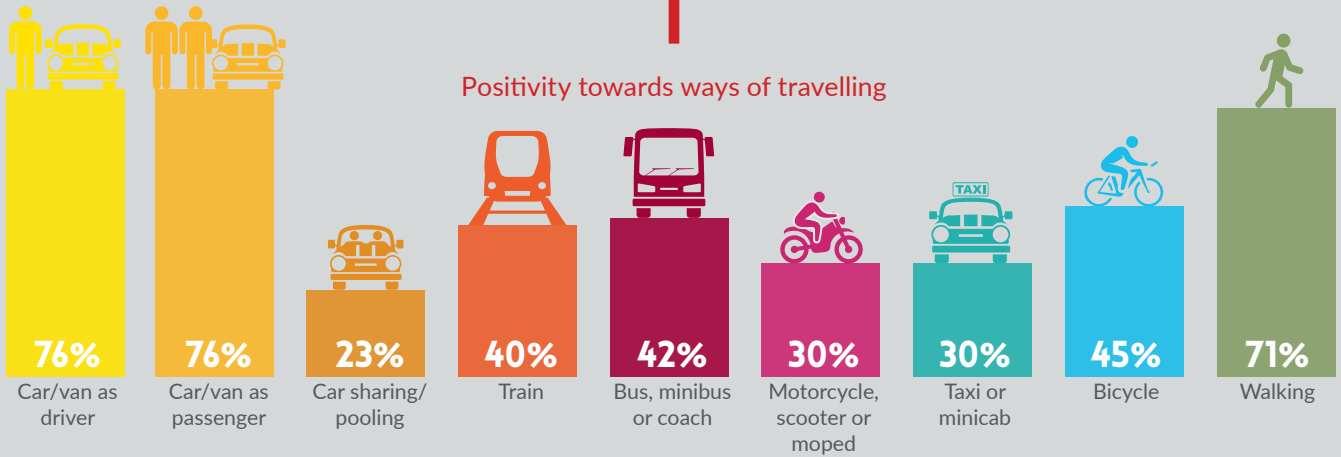
Public transport users were **over twice** more likely to **feel positively** towards using the **bus** and train

# NORTH EAST TRANSPORT BEHAVIOUR AND ATTITUDE SURVEYS

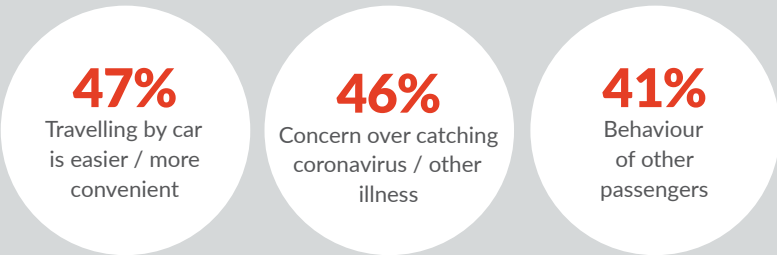
**8/10** agree that the use of face coverings on public transport makes them feel safer

Wave 14 Report  
(Survey undertaken between 29th November and 6th December 2021)  
Key Findings Infographic

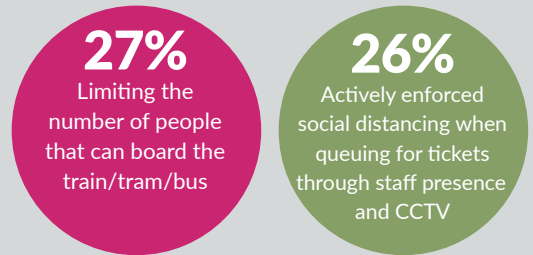
## Positivity towards ways of travelling



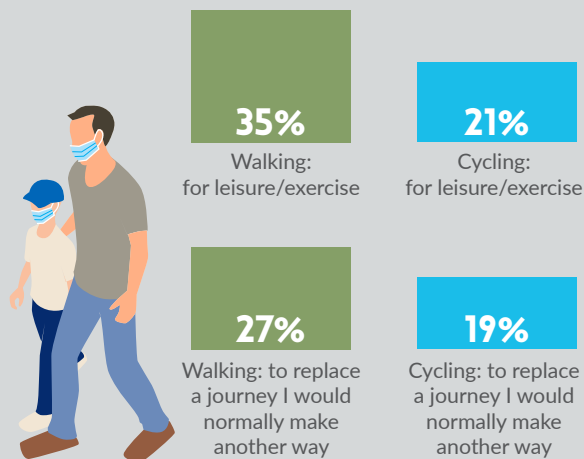
## Reasons for feeling negatively towards public transport



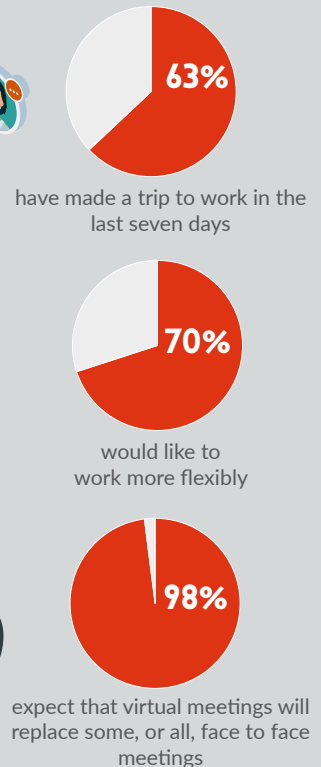
## How to feel safer



## Since the Covid-19 restrictions



## Commuting behaviours



The results for Wave 14 are broadly similar to Waves 13. Key differences include:

- More are travelling to into work
- More want to work more flexibly
- More people expect virtual meeting to replace face-to-face meetings
- Less people said they already felt safe using public transport