

NORTH EAST COMPREHENSIVE TRAVEL STUDY

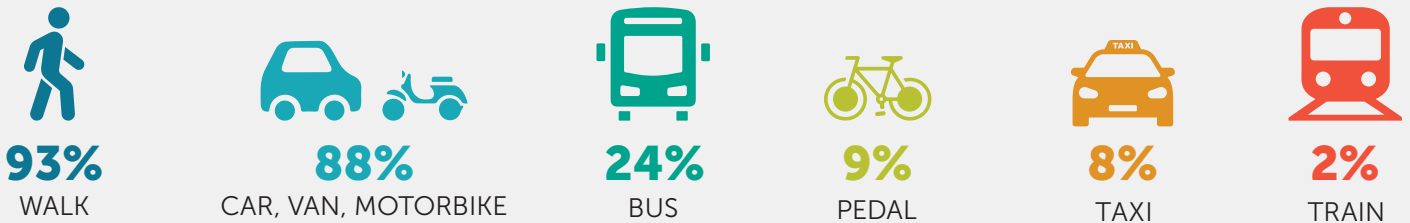
ABERDEEN CITY FINDINGS

During March and April 2023, telephone interviews were undertaken with 1,000 North East residents to better understand travel patterns and behaviours in the region, including 460 residents from Aberdeen City

nestrans



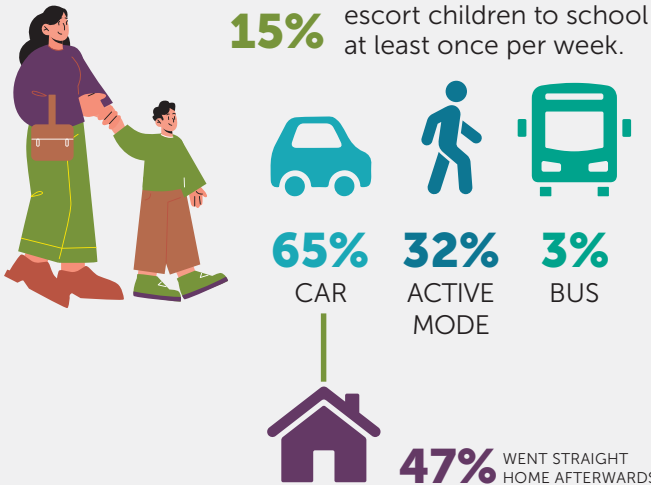
FREQUENCY OF MODE USE % of respondents using these modes of transport at least weekly



ACCESS TO A CAR % of respondents

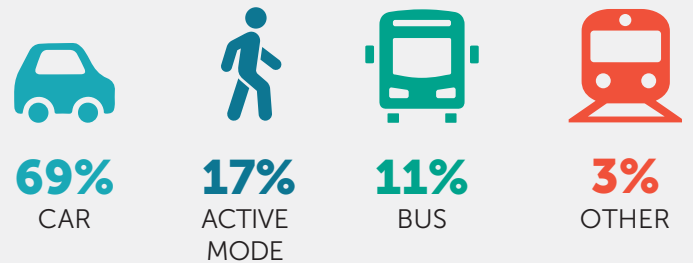


ESCORTING CHILDREN TO SCHOOL

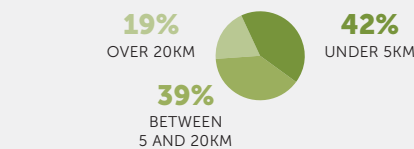


TRAVEL TO WORK 92% travelled for work at least once a week; 51% travelled for work five days

MAIN MODE OF TRAVEL:



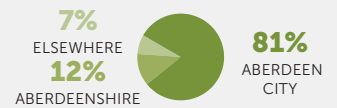
DISTANCE TRAVELLED TO WORK:



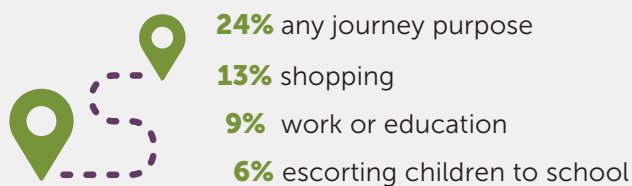
WORK FROM HOME:



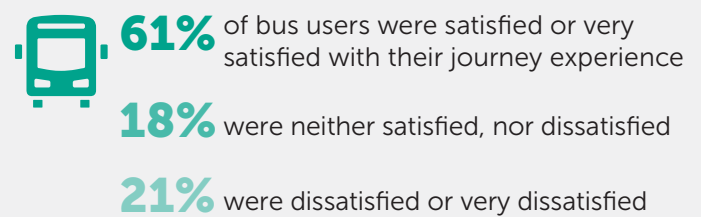
LOCATION OF WORK:



TRIP CHAINING 24% of residents trip-chain for at least one journey purpose, with reasons including:



BUS SATISFACTION



SWITCHING MODES 25% of workers who drove to work felt switching to bus would be easy; 55% felt it would be difficult and 15% felt it would be impossible.

