

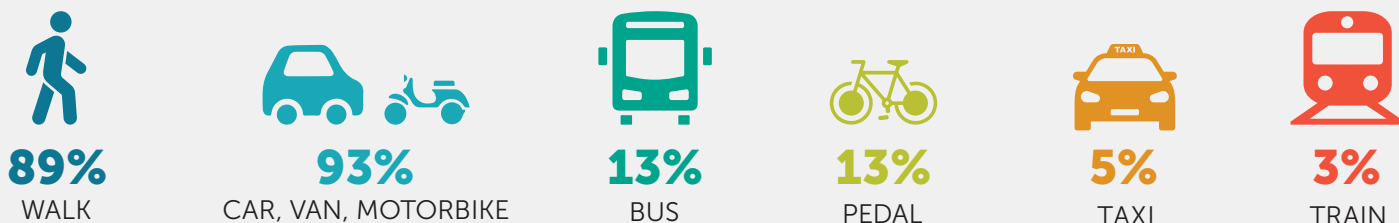
NORTH EAST COMPREHENSIVE TRAVEL STUDY ABERDEENSHIRE FINDINGS

During March and April 2023, telephone interviews were undertaken with 1,000 North East residents to better understand travel patterns and behaviours in the region, including 541 residents from Aberdeenshire.

nestrans



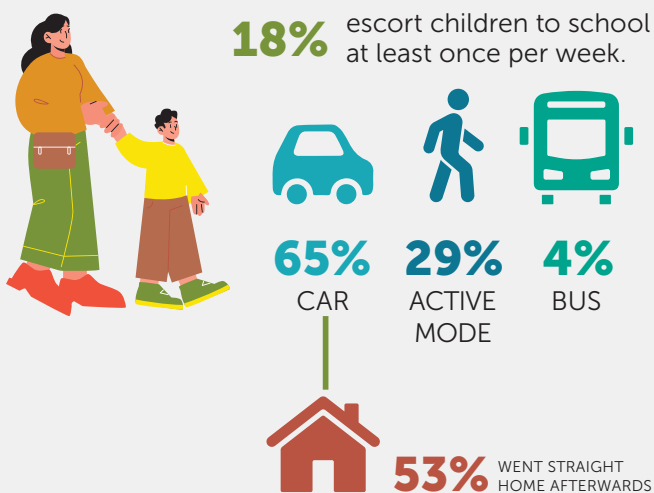
FREQUENCY OF MODE USE % of respondents using these modes of transport at least weekly



ACCESS TO A CAR % of respondents

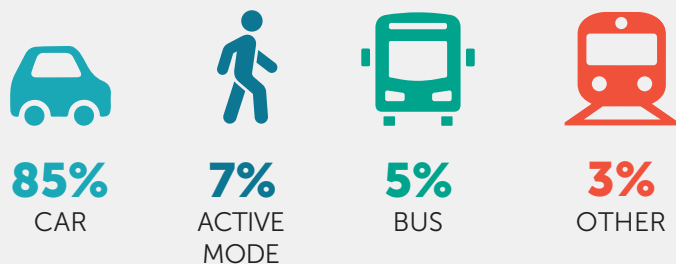


ESCORTING CHILDREN TO SCHOOL

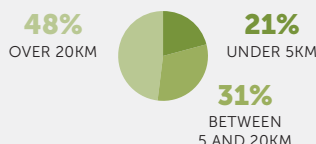


TRAVEL TO WORK 85% travelled for work at least once a week; 47% travelled for work five days

MAIN MODE OF TRAVEL:



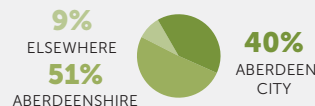
DISTANCE TRAVELLED TO WORK:



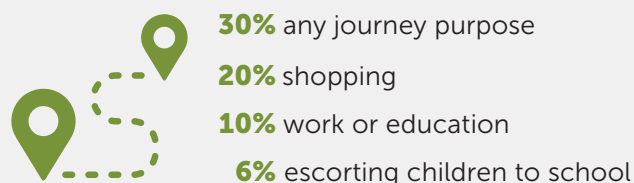
WORK FROM HOME:



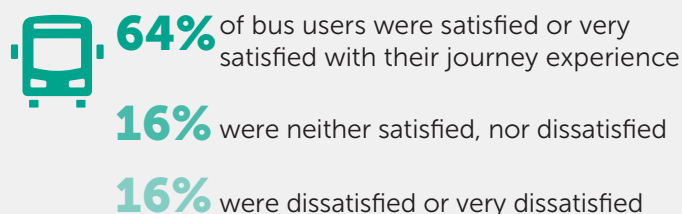
LOCATION OF WORK:



TRIP CHAINING 30% of residents trip-chain for at least one journey purpose, with reasons including:



BUS SATISFACTION



SWITCHING MODES 12% of workers who drove to work felt switching to bus would be easy; 51% felt it would be difficult and 31% felt it would be impossible.

